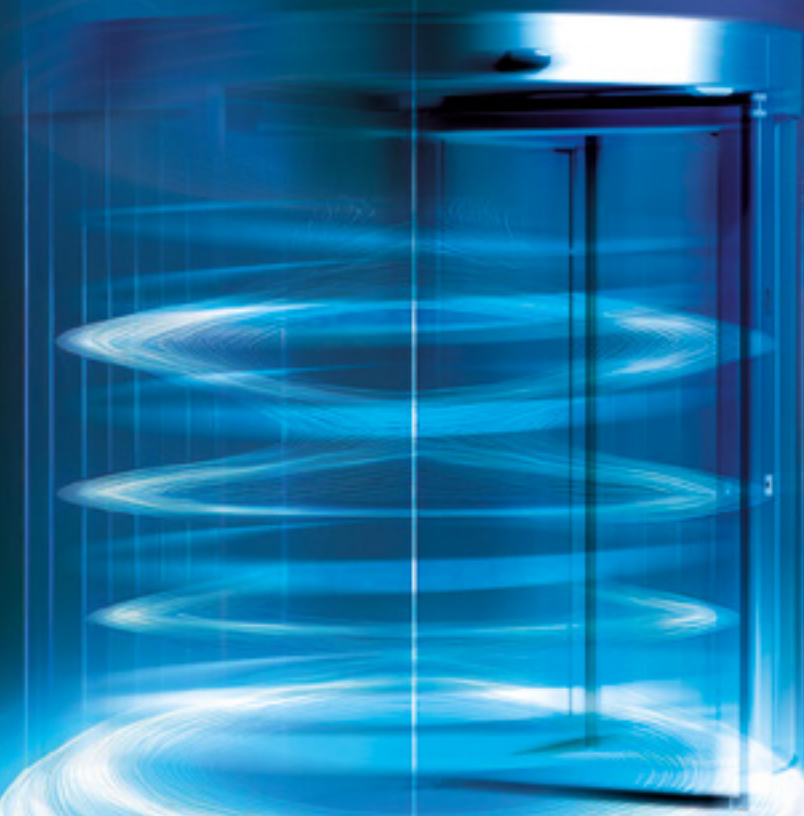


Revolve to evolve



Introducing the FAAC AG4000, our first-ever revolving door, expertly crafted to elevate entryway design with innovation, safety, and sustainability. This new product transforms entrances into welcoming gateways, blending aesthetic appeal and performance to enhance any architectural vision, while maximizing efficiency.

REVOLVE FOR A GREENER FUTURE

Discover the FAAC AG4000, our first-ever revolving door that combines efficiency, contemporary aesthetics, and advanced technology **TO REDEFINE MODERN ENTRANCES**.

Developed with installers, for installers, the AG4000 was designed and optimized with their expertise to address practical, real-world needs.

With sustainability at its core, the AG4000 enhances energy efficiency and **REDUCES THE BUILDING'S CARBON FOOTPRINT**. It minimizes energy loss by controlling airflow, ensuring year-round comfort. By regulating people flow, it lowers heating and cooling demands, while durable materials ensure long-lasting performance. With low standby energy consumption and EPD certification, it further boosts **EFFICIENCY AND SUSTAINABILITY**.

Ideal for a variety of high-traffic environments, such as hotels, shopping malls, and corporate offices, the AG4000 not only elevates the architectural appeal of any space but also creates an inviting experience.

SUSTAINABILITY AT THE CORE

- Reduced carbon footprint
- Sustainable design for long-term efficiency
- Energy-saving features for eco-conscious environments



DISTINCTIVE FEATURES

Revolve to transform spaces

The AG4000 revolving door is the perfect blend of smart technology, **THOUGHTFUL DESIGN, AND SUSTAINABILITY**. By minimizing drafts and energy loss, it helps maintain comfortable indoor climates while being remarkably energy-efficient, consuming less than 0.5W in stand-by mode.

Its sleek design elevates the architectural aesthetic of any setting, while ensuring smooth and controlled movement of people, as well as reduced noise levels.

Safety and durability make it a reliable and sustainable choice for even the busiest locations. Seamlessly integrating into diverse environments, the AG4000 offers advanced functionality, space optimization, and customization options, making it the **IDEAL SOLUTION** for both practicality and style.

KEY BENEFITS

Revolve to drive progress



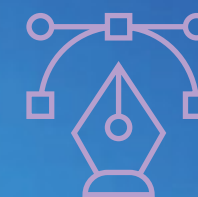
- Energy efficiency
- Durable eco-friendly design
- EPD certification



- Remote configurability
- Remote control of people flow
- Modularity & customization options
- Efficient installation & maintenance



- Leader by generations
- Trusted reliability
- Built to last



- Aesthetic Design



- Proven safety and performance
- TÜV certification

